

Fauquier County **RIT / MAYDAY** Operations

EFFECTIVE JULY 1ST, 2009
(0700)

Fauquier Fire Operations Group
05/30/2009



Objectives

- Discuss the “NOVA” RIT manual and how it will be used in Fauquier County.
- Review tactical worksheets/guides.
- Review needed equipment (standardization)
- **This is not a MAYDAY! Class.** Strongly recommend all those in attendance take the next Mayday! Class!!!
- Practical scenarios at acquired structure
- Personnel provide FEEDBACK to the group



Background

- Dispatch assignment has already been changed to include a RIT Engine (typically 4th arriving)
- Manual was adopted by surrounding jurisdictions over 6 years ago and in use on a regular basis.
- The past 2 years have resulted in 7 major MAYDAY events in the region...



See Video



RIT Manual

- 16 page document which outlines specific equipment, emergency/survivability procedures, dispatch of resources, lost/trapped FF procedures, and terminology.
- ***Please read over manual in its entirety, this presentation is only an overview!***
- Like the SFD manual, already adopted and in use by surrounding jurisdictions.



What is RIT? (Rapid Intervention Team)

A team consisting of at least three firefighters, one of which is an officer, that are immediately available to respond to requests of help from lost, trapped, disoriented, or incapacitated firefighters.



Did you know?

- Numerous jurisdictions such as:
 - Prince William County, VA
 - Phoenix, AZ
 - New York City, NY

All have conducted tests on the amount of FF's needed to effect a single FF rescue...

Average of 11-14 personnel are needed!



R.I.T. Staging Location

- Preferably within visual contact of the Incident Commander.
- NOT DIRECTLY AT THE COMMAND POST.
- Immediately outside of the IDLH.
- Consider having multiple RIT Teams in place and adding additional companies to the existing team as needed (level 2 and 3)
- Consider additional personnel/units with specialized equipment (level 3)



R.I.T. Officer

(may become RIT Group)

- Conducts a fireground size up.
- Determine ingress and egress routes.
 - Windows, doors, basements etc. with bars...
 - Make alternate plans for ingress and egress routes
- Know the fire/ building conditions.
 - What's on fire, where is the fire, what stage is the fire in
 - Signs for a back draft or flashover
- Listen to the radio
 - Know the location of operating crews (attack, rescue, ventilation etc..)
 - Monitor the various channels being used on the fireground (Ops. Channel, O-channel, etc.)
 - TURN OFF SCAN!
- Stay focused on the task.
 - Pay attention, maintain situational awareness!!!



Scene/ Incident Size up

- Look at all 4 sides if possible.
- Report your findings to the I.C. and/or your supervisor.
- Smoke or fire location
- Power lines
- Barred windows
- Parked cars
- Window AC's
- Building construction
- Location of hose lines/ crews
- Constantly size up the incident.
- Note any changes from your previous size up.



RIT Manual Overview

■ Command procedures

Upon receipt of MAYDAY or lost/missing Firefighter:

- Initiate PAR check and try to confirm # of missing.
- Make general announcement on the Ops. channel.
- Develop/Revise IAP
- Monitor ALL applicable radio channels (ie. Ops, O-channel)
- Communications Steps
- Expand ICS (ie. RIT group etc.)
- Deploy initial RIT (recon team) or RIT group
- Request additional resources



RIT Level 1

1. Initial assignment of RIT (perform size up, acts as a recon team).
2. Typically 4th arriving Engine company from initial alarm.
3. **Primary job function**= proactive measures to improve safety, ready for MAYDAY event by having knowledge and equipment ready!!



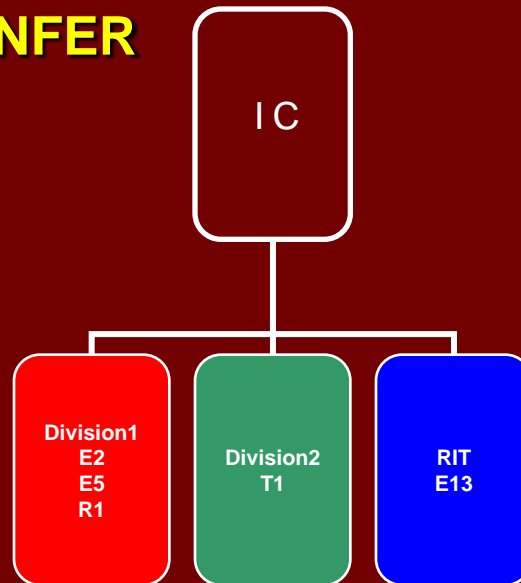
Planning for initial RIT



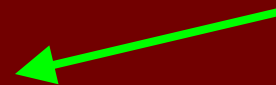
1. REPORT TO & CONFER WITH IC



**2. RECON STRUCTURE
3. ASSESS & FORECAST
CONDITIONS**



**4. CONFIRM LOCATION OF
UNITS**





Tools and Equipment

- PPE/SCBA
- Hand-lights
- Radios
- Forcible entry/exit hand tools
- Lifeline pack
- Chain saw
- Battery operated reciprocating saw
- Thermal Imager
- RIT Air Supply Bag (spare SCBA if needed)
- Reeves and/or other patient packaging devices
- SCBA units with extension hose and buddy breather capability
- Assess supplied air availability
- Designated hoseline for RIT
- If equipped, use the SCOTT Pak Tracker

ENSURE DAILY INSPECTIONS ARE COMPLETED ON YOUR PPE AND S.C.B.A.!!!



Tools and Equipment

Consider the acronym **"BRIEFCASE"**

- B**- Big Hammer
- R**- Roof Hook
- I**- Irons
- E**- Entrapment/ Egress Tools
- F**- Firefighter Medical Equipment
- C**- Camera (Thermal Imager)
- A**- Air (RIT Air Bag, SCBA, etc.)
- S**- Search Rope/life line
- E**- Elevation Access



*****RIT SHOULD BE RAPID, DON'T BECOME OVERWEIGHTED WITH EQUIPMENT!!!**



Proactive RIT Measures

Placement of ground ladders to support firefighter egress.



Various other tasks may be done to enhance overall scene safety such as forcible entry, utilities, etc. as long as the RIT is ready for immediate deployment!



Placement of lighting at strategic entry points to illuminate a point of egress.



RIT Level 2

- RIT Task Force consists of:
 - 1 Engine Co.
 - 1 Special Service Unit
 - 1 Battalion Supervisor/Command Officer
 - 1 Safety Officer (may need to appoint one on the scene)
 - 1 ALS transport unit
- Provides enhanced rescue capability
- Augments initial RIT and forms the RIT Group



Why Level 2....?

- **Need is based on the judgment of the IC. Deteriorating conditions, large commercial building fires or other complex fire ground situations may warrant the request. Is considered a proactive measure, but may be called for later into the incident!**



RIT Level 3

- **Collapse Rescue Task Force of units with structural collapse rescue capabilities.**
- **Units will augment RIT Level 1 company and RIT 2 Task Force.**
- **Fauquier County can NOT do this and will need outside resources!!!**



RIT Level Recap

- RIT Level 1
 - Initial response (1 Engine Co.)
- RIT Level 2
 - Task Force
 - IC feels need for additional units
- RIT Level 3
 - Collapse rescue response



Other parts of the manual

- Provides an equipment guide for units to follow.
- RIT (RECON Team) procedures.
- Survival considerations
 - Radio and PASS device Operations
 - Wall sounding
 - Drywall kick through, kick, and climb
 - Disentanglement
 - SCBA emergencies, skip breathing
 - Ladder, rope, and hose slides
 - Crouch and cover
 - Two arm hang and drop
- Procedure to call a MAYDAY!



Calling the MAYDAY!

- Used when a firefighter has become lost, trapped, or in a life threatening situation (you may need to call for someone else also!)
- MAYDAY Transmission:
 - Activate EA Button (pushing orange button), may need to use antenna
 - Mayday, Mayday, Mayday
 - Unit # repeated 3 times (Engine 15, Engine 15, Engine 15)
 - Location (floor and quadrant location)
 - Nature of Emergency/Air Supply (cut off by floor collapse, out of air, one member missing, etc.)
 - Mayday, Mayday, Mayday, command acknowledge (ensure to activate your PAS device after calling the Mayday, and key mic so ALL can hear.)



L.U.N.A.R.

- Acronym used to help you when calling a MAYDAY

MAYDAY, MAYDAY, MAYDAY

Last known location

Unit/Name (X3)

Nature of Emergency

Air Supply

Resources Needed

MAYDAY, MAYDAY, MAYDAY, COMMAND ACKNOWLEDGE!

**Don't forget to activate PASS Device
after calling the MAYDAY!!!**



Calling the MAYDAY

- Should be brief and concise.
- Make sure to speak slowly and clear
- May have to switch over to the "0" channel if in a "dead" spot.
- Ensure Command acknowledges the MAYDAY (ECC may have to relay)
- Don't forget to give the name of the missing member if you are calling the MAYDAY for someone else!



Cheat Sheet

- Go over SFD and MAYDAY Command Checklist handouts...



Summary

- Easy to understand and use manual
- Effective July 1st, 2009 (0700)
- ALL Operations Group Material available at www.fauquierfirerescue.org, under the Operations tab, then under the Fauquier Operations Group tab.
- Read over the entire manual, this presentation was an overview!!!

Get the job done.....
no matter what it takes...

and

NEVER GIVE UP!



Questions???

Thank you for your attention!